

# Transperineal Pelvic Floor Ultrasound Scan

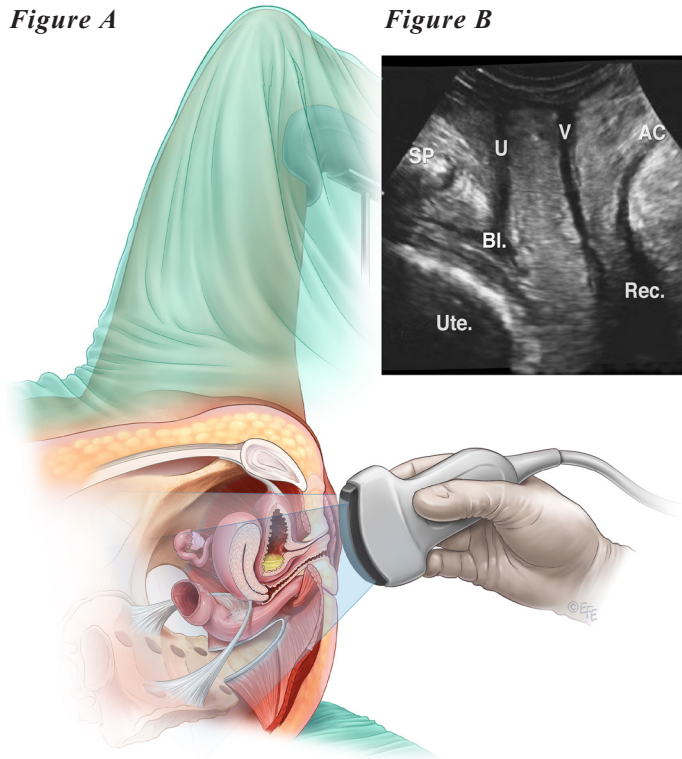
## A Guide for Women

1. What is a transperineal pelvic floor ultrasound scan?
2. Is there any special preparation before the scan?
3. What should I expect during the scan?
4. What information does the scan provide?
5. How long will the scan take?
6. Are there any risks involved?
7. What happens with the results of the scan?

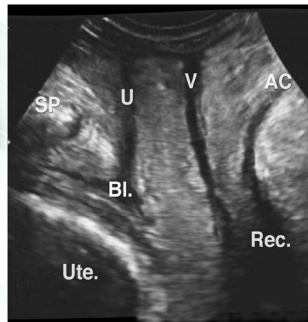
### What is a transperineal pelvic floor ultrasound scan?

This is a scan of the pelvic floor using a hand-held probe or 'transducer' which is placed on the perineum (the area between the vagina and the anus). This enables images to be taken of the bladder, urethra (water pipe), vagina, cervix, uterus (womb), perineum, anal canal, and pelvic floor muscles. See images below.

**Figure A**



**Figure B**



*Figure A shows how the transducer is placed on the perineum.*

*Figure B shows the pelvic floor organs: SP-pubic symphysis (pubic bone), U-urethra, Bl-bladder, V-vagina, Ute-uterus, AC-anal canal, R-rectum (lowest part of the bowel).*

### Is there any special preparation before the scan?

You may be asked to empty your bladder just before the scan. For best results, it is better if you have also had a recent bowel movement.

### What should I expect during the scan?

The scan is performed by a trained health care professional. After undressing from the waist down, you will be asked to lie down on an examination chair or table and cover yourself with a sheet or drape. The lights will be dimmed to provide clearer visualization of the screen during the scan. You will then be asked to bend your knees and bring them as close to your buttocks as possible. After applying gel on the transducer and covering it with a powder free glove, more gel is applied on the transducer which will then be placed on the perineum. This might feel a bit cold, but the scan itself does not produce any major discomfort. You may feel the pressure of the probe. Sometimes it is necessary to part the labia (lips of the vagina) and the probe might be moved in different directions. During the scan, you will be asked to squeeze and bear down a few times in order to obtain precise information. The person doing the scan will explain exactly what you need to do. Sometimes it might be necessary to perform the scan with you in a standing position.

### What information does the scan provide?

The scan will show pelvic floor problems such as prolapse of the bladder, uterus, rectum and bowel. In addition, it will show if there has been previous damage to the pelvic floor muscles and/or anal canal during childbirth. If you previously had 'mesh implants' or a sling inserted, these may also be seen on the scan. Other findings that can be seen include incomplete emptying of the bladder, proper functioning of the pelvic floor during muscle contraction, and complex problems of the back passage such as a prolapse of the vaginal back wall (rectocele) or rectal intussusception (when the rectum telescopes on itself). These findings will assist your doctor with planning appropriate treatment.

### How long will the scan take?

The scan usually takes about 10-15 minutes.

### Are there any risks involved?

Ultrasound scans are considered to be safe, and there are no known risks of performing transperineal scans.

### What happens with the results of the scan?

The findings will be forwarded to your doctor, who will then discuss the findings with you.

The information in this leaflet aims to answer common questions about performing a transperineal scan. If you have additional questions, be sure to ask your doctor.

For more information, visit [www.YourPelvicFloor.org](http://www.YourPelvicFloor.org).